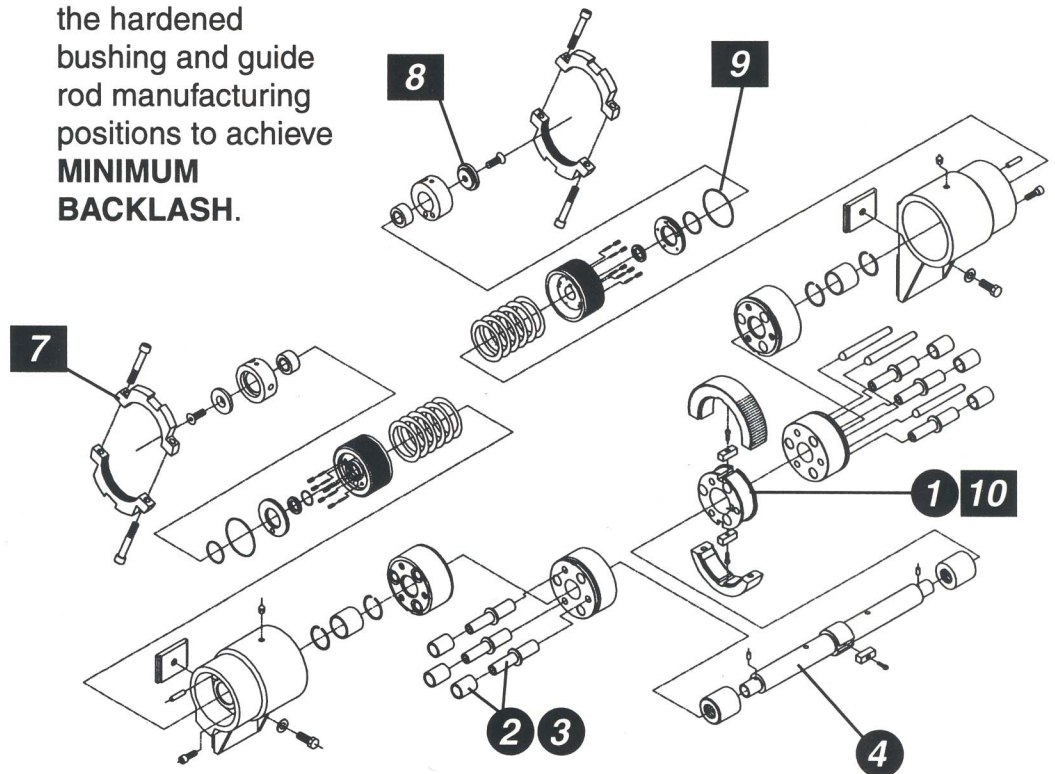


ANTI-BACKLASH NECKRING MECHANISM

Maui Technology®



1. Hardened drive gears are available in 48-tooth size, all 1 1/2" wide.
2. Hardened bushing and guide rods substantially reduce common existing wear areas and increase life.
3. Perfect tolerances are maintained on the hardened bushing and guide rod manufacturing positions to achieve **MINIMUM BACKLASH.**
4. The central spineless shaft is chrome-plated in all critical wear areas.
5. Completely interchangeable with all existing #991-5149 series, 48-tooth, conventional ring mechanisms.
6. Positive latch feature is available on request.
7. Constant grip nuts are available on request.



8. Needle bearings on main shaft.

9. Seals in the end bearings.

10. Split gear.